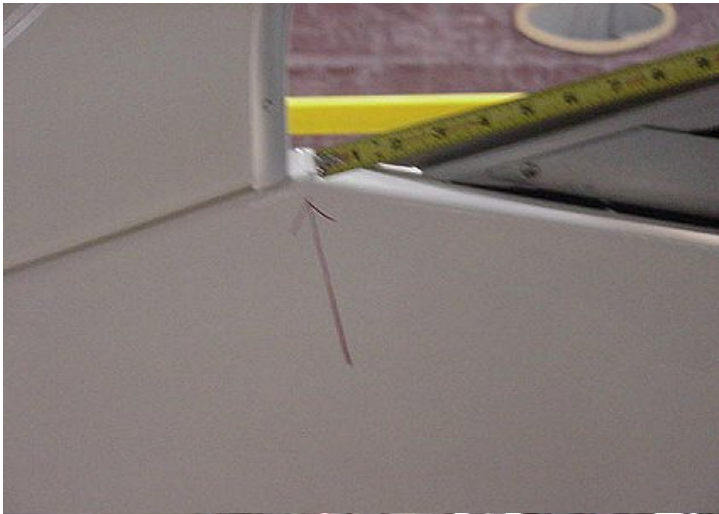


# **35 SY Maxum Bimini Frame/Track Packing List**

- \_\_\_ 3 Bow Stainless Steel Frame \*
- \_\_\_ 8 Angle Mounts (4 w/ Quick Pins)
- \_\_\_ 2 Concave Mounts
- \_\_\_ 16 #10x3/4" Oval Head Screws
- \_\_\_ 4 10/24x3/4 Machine Screws
- \_\_\_ 100 Flex Rail Screws (1 pkg)
- \_\_\_ 1 #0 Square Tip Screwdriver
- \_\_\_ 6 Lock Washers
- \_\_\_ 4 Strut Clips
- \_\_\_ Forward Track Mount Pattern

## Track Package

- \_\_\_ 2 @ 7' 6" (aft bimini & enclosure)
- \_\_\_ 2 @ 3' 0" (aft bimini & enclosure)
- \_\_\_ 2 @ 7' 6" (forward bimini & enclosure)
- \_\_\_ 1 @ 1' 6" (forward bimini & enclosure)



Use this point to locate mounts for front half of bimini top.



Measure forward 24" to center of mount. Secure a concave mount to windshield with 10\24x3\4 machine screws provided. This is the mount for the largest bow. Repeat on other side.



Measure from the same point straight up to 36". This is the center of forward strut mount. Secure an angle mount facing out with two #10x3/4" screws provided. Leave 1/2" space between mount and aluminum molding on arch. Repeat on other side.



The aft section of the top has three mount points. Measure from the end of arch 2", 39" and 59". The first mount is an angle mount with a quick pin for strut. Secure all three mounts against facing in with aluminum molding on inside edge of arch with #10x3/4" screws provided. Repeat on other side



This picture shows the track and the 1/2" recess from front edge.  
Use pattern for correct location



Starting at the front center of arch, secure center of 18" piece of track with flex rail screws provided. Recess track about 1/2" from front edge of arch. A 90" piece of track is then installed at either end of 18" piece. Match up track so rope will slide easily through. Continue securing track around corner to end of track.



Measure 4" from corner of arch to the front side of track so that the track does not follow edge for about the last 6".



The track on the backside of the arch is split on the center. Mark a 2" line from inside edge of the arch. Secure a 90" track to either side of center. Bend track around arch following 2" line to end of track. To finish aft track, secure 36" track at each end to bottom of arch.



This picture shows the track on the backside of arch. It is set back 2" from inside edge and is constant from one end to the other.

